



North of STA 385+00



North of STA 390+00



South of STA 390+00



North of STA 395+00



South of STA 395+00



North of STA 400+00



South of STA 400+00



North of STA 405+00



South of STA 405+00



North of STA 410+00



South of STA 410+00



North of STA 415+00



South of STA 415+00



North of STA 420+00



South of STA 420+00



North of STA 425+00



South of STA 425+00

CEPRA Beach Monitoring Program:

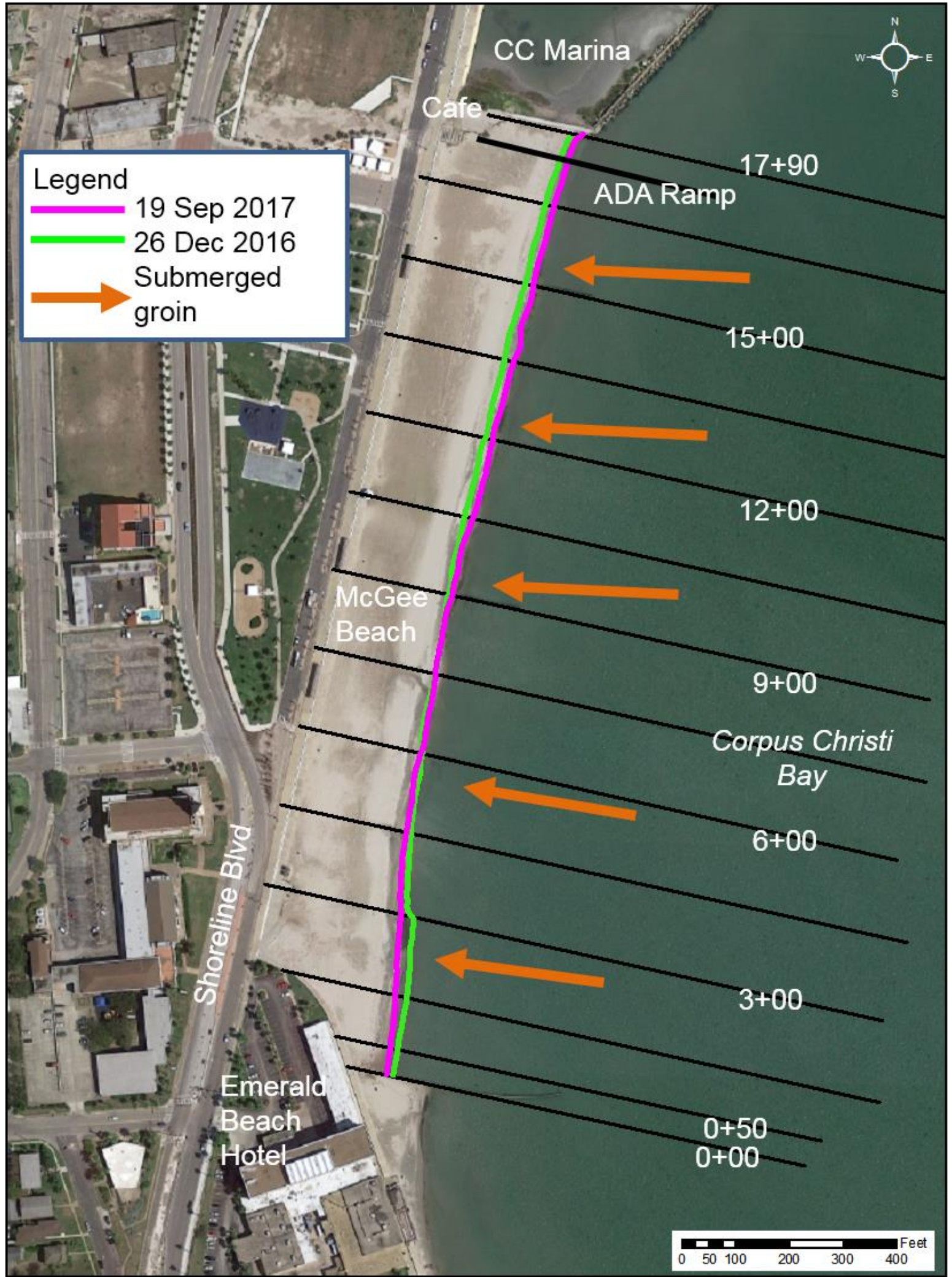
**McGee Beach: Site Photos
Post-Hurricane Harvey**

3 Oct 2017



Legend

- 19 Sep 2017
- 26 Dec 2016
- Submerged groin



0+50
0+00

17+90

ADA Ramp

15+00

12+00

McGee Beach

9+00

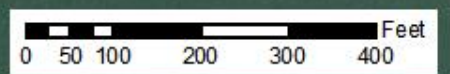
Corpus Christi Bay

6+00

Shoreline Blvd

3+00

Emerald Beach Hotel





North of STA 0+00



South of STA 0+00



North of STA 0+50



South of STA 0+50



North of STA 1+50



South of STA 1+50



North of STA 3+00



South of STA 3+00



North of STA 4+50



South of STA 4+50



North of STA 6+00



South of STA 6+00



North of STA 7+50



South of STA 7+50



North STA of 9+00



South of STA 9+00



North of STA 10+50



South of STA 10+50



North of STA 12+00



South of STA 12+00



North of STA 13+50



South of STA 13+50



North of STA 15+00



South of STA 15+00



North of STA 16+50



South of STA 16+50

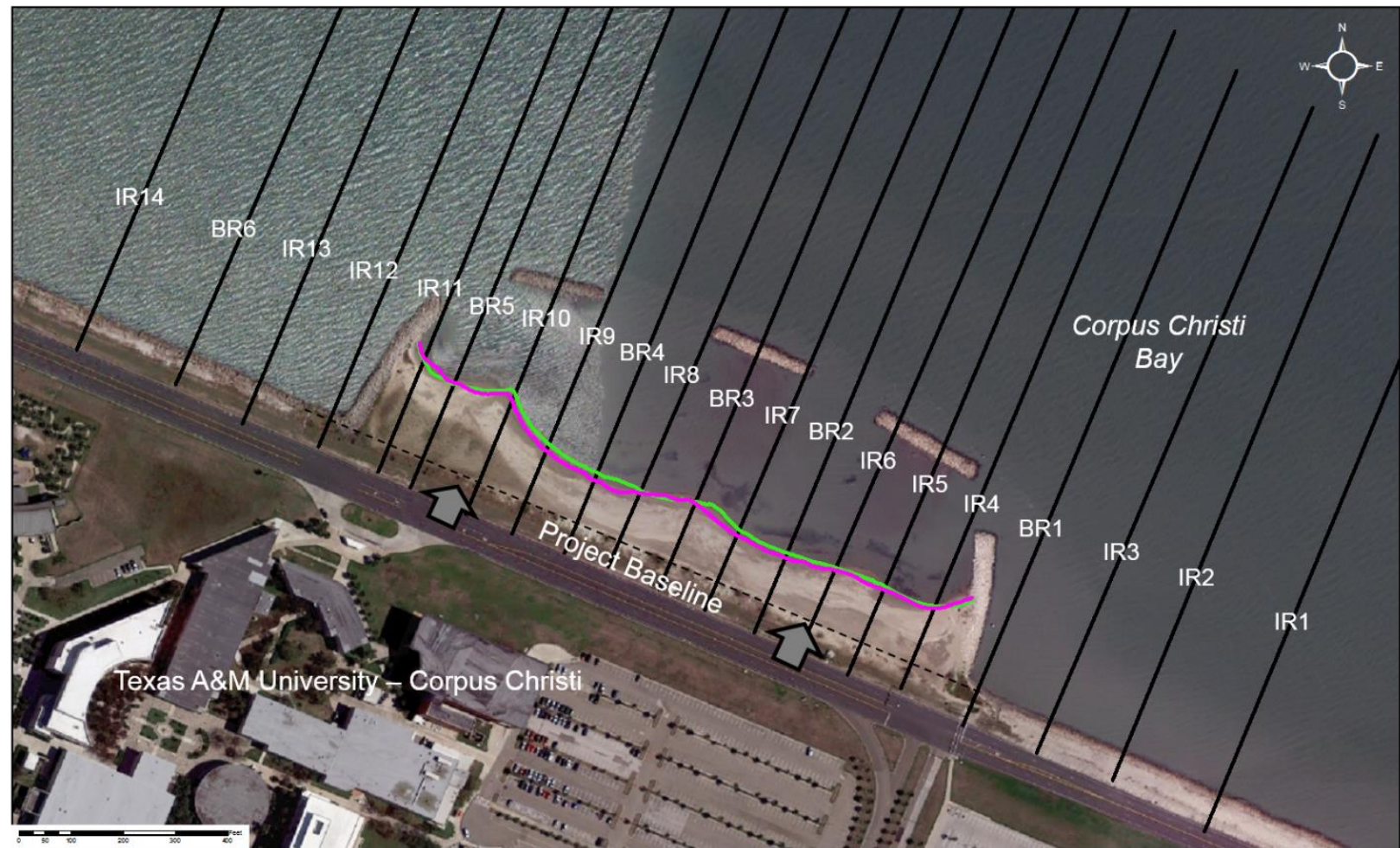


North of STA 17+90



South of STA 17+90

**CEPRA Beach Monitoring Program:
University Beach: Site Photos
Post-Hurricane Harvey
3 Oct 2017**





Northwest of IR1



Southeast of IR1



Northwest of IR2



Southeast of IR2



Northwest of IR3



Southeast of IR3



Northwest of BR1



Southeast of BR1



Northwest of IR5



Southeast of IR5



Northwest of IR4



Southeast of IR4



Northwest of IR6



Southeast of IR6



Northwest of BR2



Southeast of BR2



Northwest of IR7



Southeast of IR7



Northwest of BR3



Southeast of BR3



Northwest of IR8



Southeast of IR8



Northwest of BR4



Southeast of BR4



Northwest of IR9



Southeast of IR9



Northwest of IR10



Southeast of IR10



Northwest of IR10



Southeast of BR3



Northwest of BR5



Southeast of BR5



Northwest of IR11



Southeast of IR11



Northwest of IR12



Southeast of IR12



Northwest of IR13



Southeast of IR13



Northwest of BR6



Southeast of BR6