



Northwest of STA 47+70



Southeast of STA 47+70



Northwest of STA 48+20



Southeast of STA 48+20



Northwest of STA 49+00



Southeast of STA 49+00



Northwest of STA 49+30



Southeast of STA 49+30



Northwest of STA 50+00



Southeast of STA 50+00

CEPRA Beach Monitoring Program:

North Beach: Site Photos

Post-Hurricane Harvey

15 Jan 2018



Transect 22+00, closer to the bay looking SW toward the Lexington



Transect 24+00, closer to the street looking SW toward the Lexington



Transect 14+00, closer to the street looking NE toward Fajitaville



Transect 14+00, closer to the street looking NE toward Fajitaville, enlarged.



Transect 14+00, closer to the bay looking SW toward the Lexington



Transect 14+00, closer to the bay looking NE toward Fajitaville



Between Transect 16+00 & 18+00 by closer to the bay looking NE toward Fajitaville



Between Transect 28+00 & 30+00, just S. of Surfside Park, closer to the bay looking NE toward Villa Del Sol



Transect 22+00, closer to the bay looking NE toward Villa Del Sol



Transect 64+00, closer to the bay looking NE toward the Jetty



Transect 64+00, closer to the bay looking NE toward the Jetty



Transect 58+00, closer to the street looking NE toward the Jetty



Transect 58+00, closer to the bay looking NE toward the Jetty



Transect 68+00, closer to the bay looking NE toward the Jetty



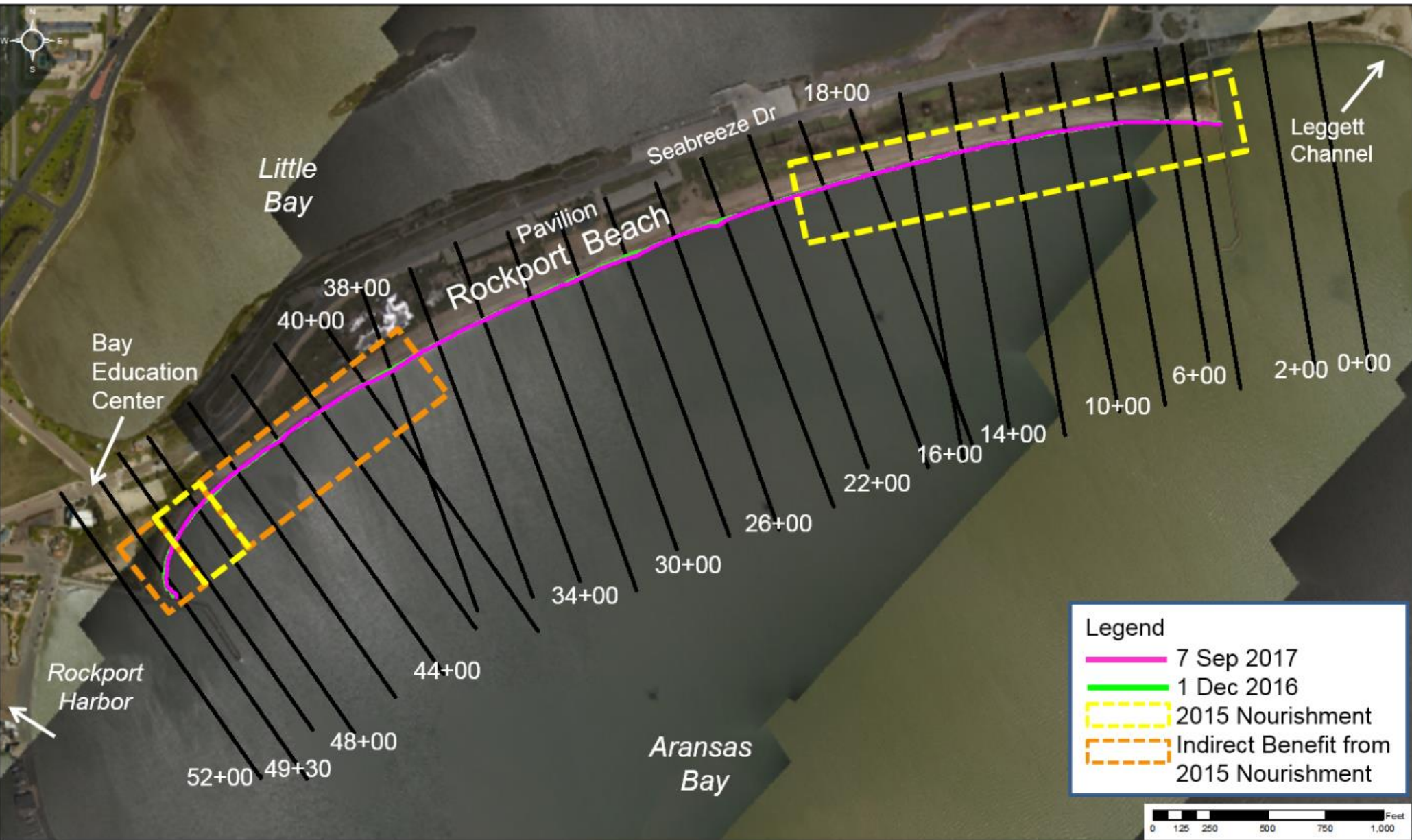
Transect 58+00, closer to the bay looking SW toward the Lexington

CEPRA Beach Monitoring Program:

Rockport Beach: Site Photos

Post-Hurricane Harvey

30 Dec 2017





North of STA 0+00



South of STA 0+00



North of STA 2+00



South of STA 2+00



North of STA 5+00



South of STA 5+00



North of STA 6+00



South of STA 6+00



North of STA 8+00



South of STA 8+00



North of STA 10+00



South of STA 10+00



North of STA 12+00



South of STA 12+00



North of STA 14+00



South of STA 14+00



North of STA 16+00



South of STA 16+00



North of STA 18+00



South of STA 18+00



North of STA 20+00



South of STA 20+00



North of STA 22+00



South of STA 22+00



North of STA 24+00



South of STA 24+00



North of STA 26+00



South of STA 26+00



North of STA 28+00



South of STA 28+00



North of STA 30+00



South of STA 30+00



North of STA 32+00



South of STA 32+00



North of STA 34+00



South of STA 34+00



North of STA 36+00



South of STA 36+00



North of STA 38+00



South of STA 38+00



North of STA 40+00



South of STA 40+00



North of STA 42+00



South of STA 42+00



North of STA 44+00



South of STA 44+00



North of STA 46+00



South of STA 46+00



North of STA 48+00



South of STA 48+00



North of STA 49+30



South of STA 49+30



North of STA 50+50



South of STA 50+50



North of STA 52+00



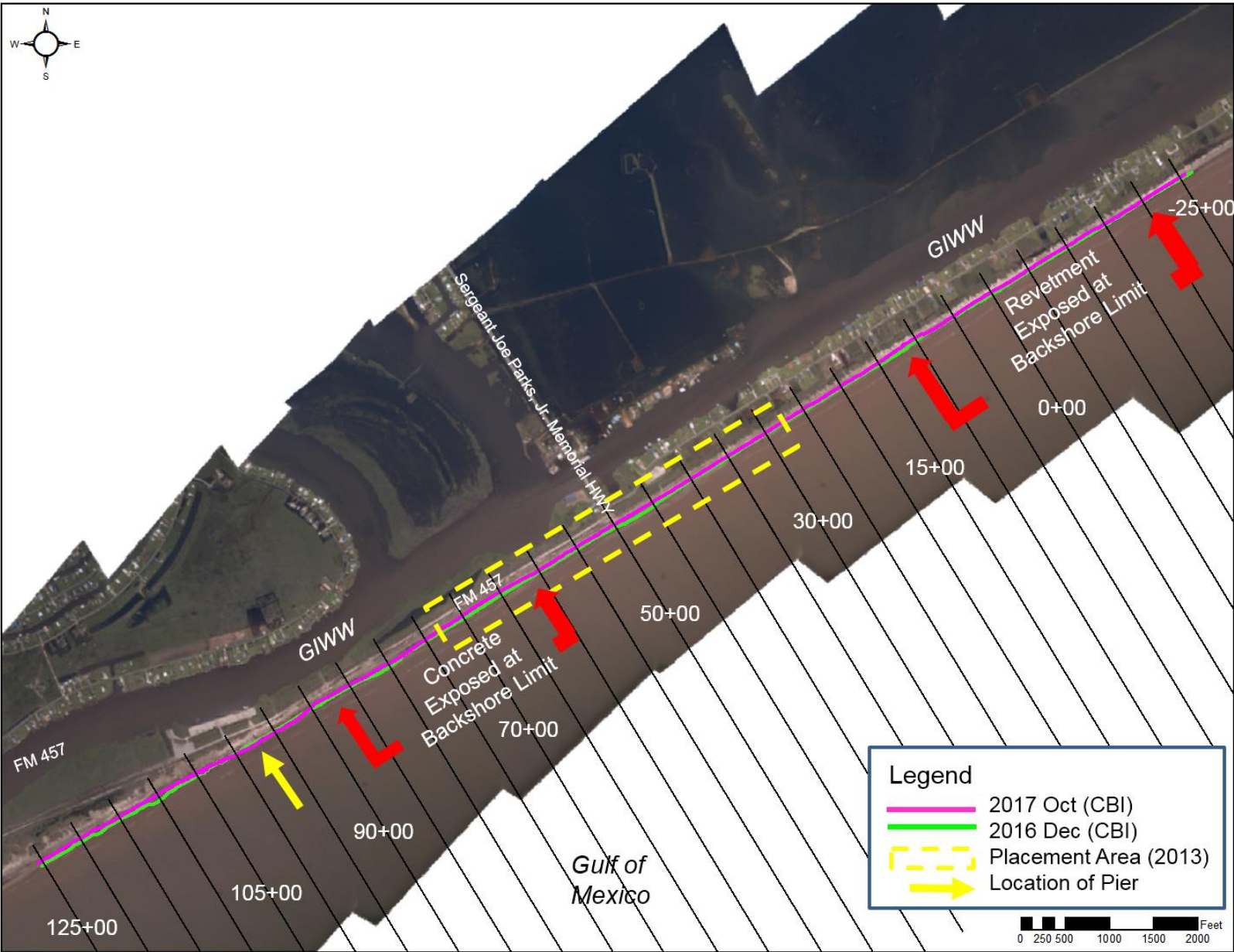
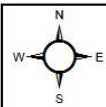
South of STA 52+00

CEPRA Beach Monitoring Program:

Sargent Beach: Site Photos

Post-Hurricane Harvey

12 Oct 2017





North of STA -25+00



South of STA -25+00



North of STA -20+00



South of STA -20+00



North of STA -15+00



South of STA -15+00



North of STA -10+00



South of STA -10+00



North of STA -5+00



South of STA -5+00



North of STA 0+00



South of STA 0+00



North of STA 5+00



South of STA 5+00



North of STA 10+00



South of STA 10+00



North of STA 15+00



South of STA 15+00



North of STA 20+00



South of STA 20+00



North of STA 25+00



South of STA 25+00



North of STA 30+00



South of STA 30+00



North of STA 35+00



South of STA 35+00



North of STA 40+00



South of STA 40+00