

Appendix II

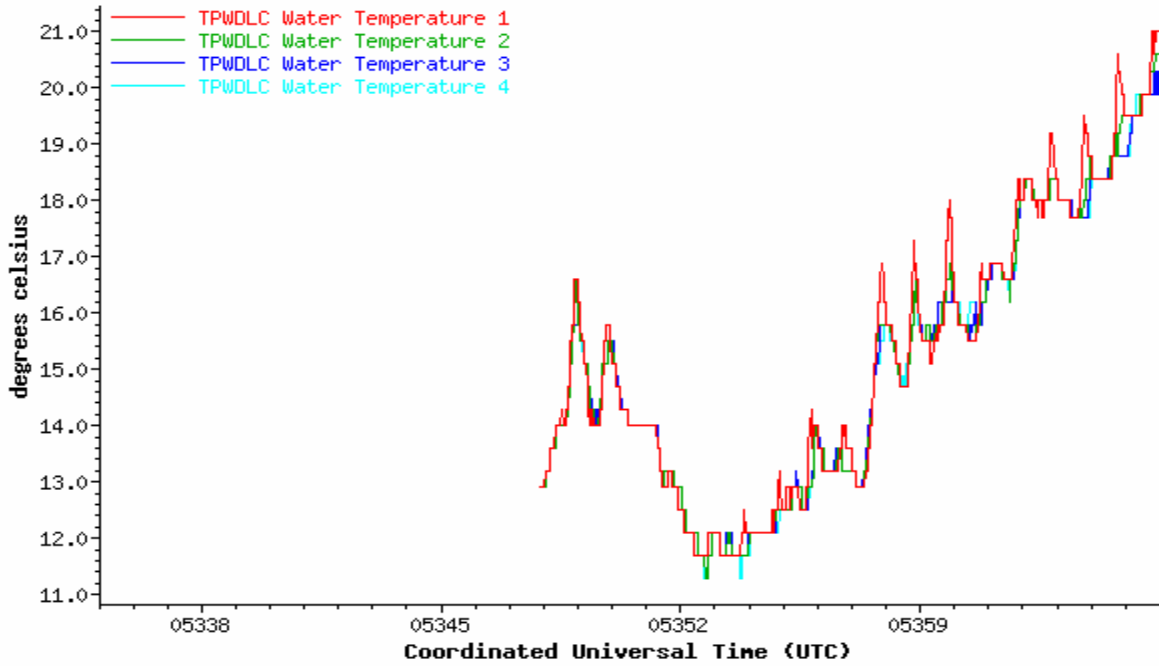
Water Temperature Histories at the TPWD Land Cut Station

Monthly temperature profiles measured at the Texas Parks and Wildlife Department Land Cut station from December 13, 2005, date of the station installation to August 31, 2007. Discussion of the profiles is found in the text of the related report “Monitoring and Predictive Modeling of Water Temperatures in the Laguna Madre”. During some portions of the water temperature record no differences can be observed between the four sensors while during other portion of the records growing differences can be observed. Such differences stopped after sensor replacements and the overall analysis (see report text) shows that technical problems are the cause of these discrepancies and that only minor water temperature differences should be observed otherwise.

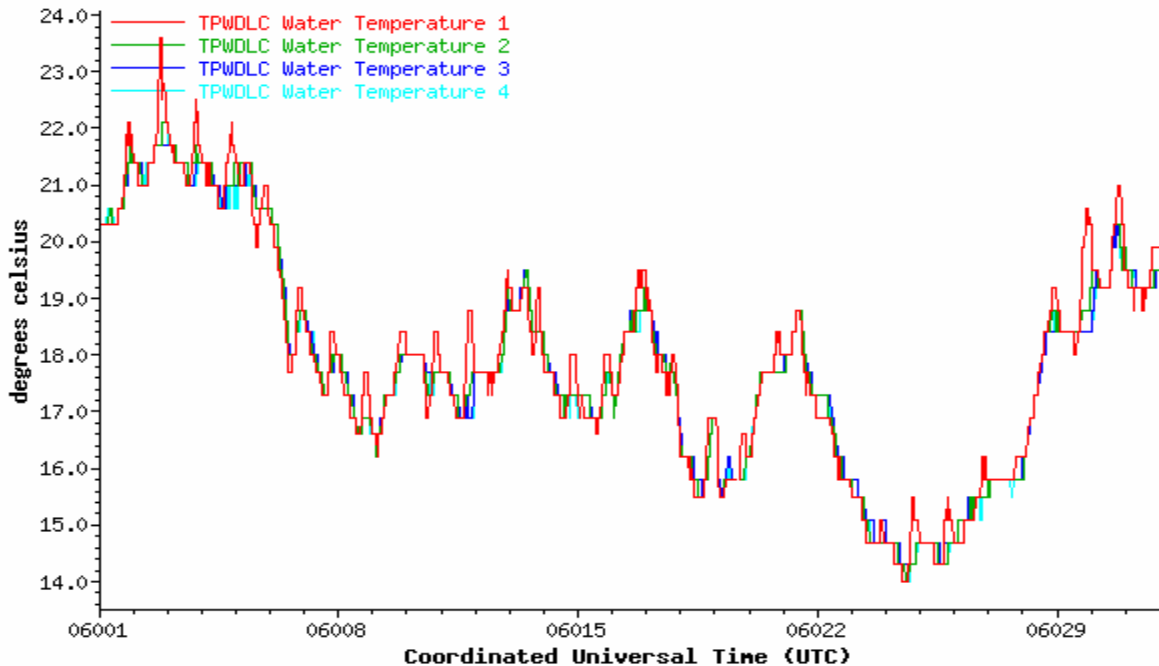
Station Name:	Texas Parks & Wildlife Department, Land Cut Station
DNR ID:	141
Abbreviation:	TPWDLC
Location:	26° 55.883' N, 97° 27.388' W 26.9313900 / -97.4564700
url:	http://lighthouse.tamucc.edu/overview/141
Information collected:	water temperatures at 4 depth within the water column
Data collection Start:	December 13, 2005
Communication:	Satellite transmission, measurements available on the web typically within 1 hr.
Check / Maintenance:	July 24, 2007: Replacement of thermistor string
Other information:	Added correction record for wtp1, wtp3, wtp4 to remove data from 2007178+1130 to 2007198+0000 as per John Adams.



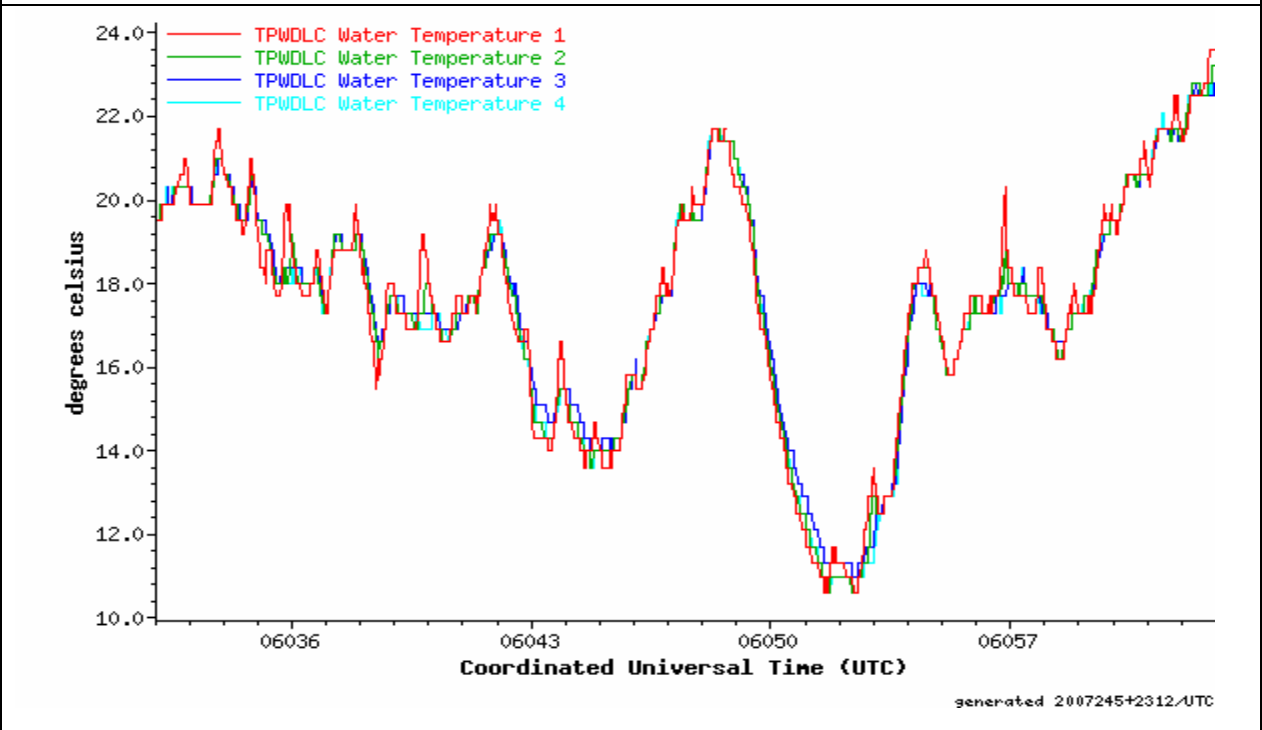
December 2005 Temperature records for the TPWD Land Cut Station



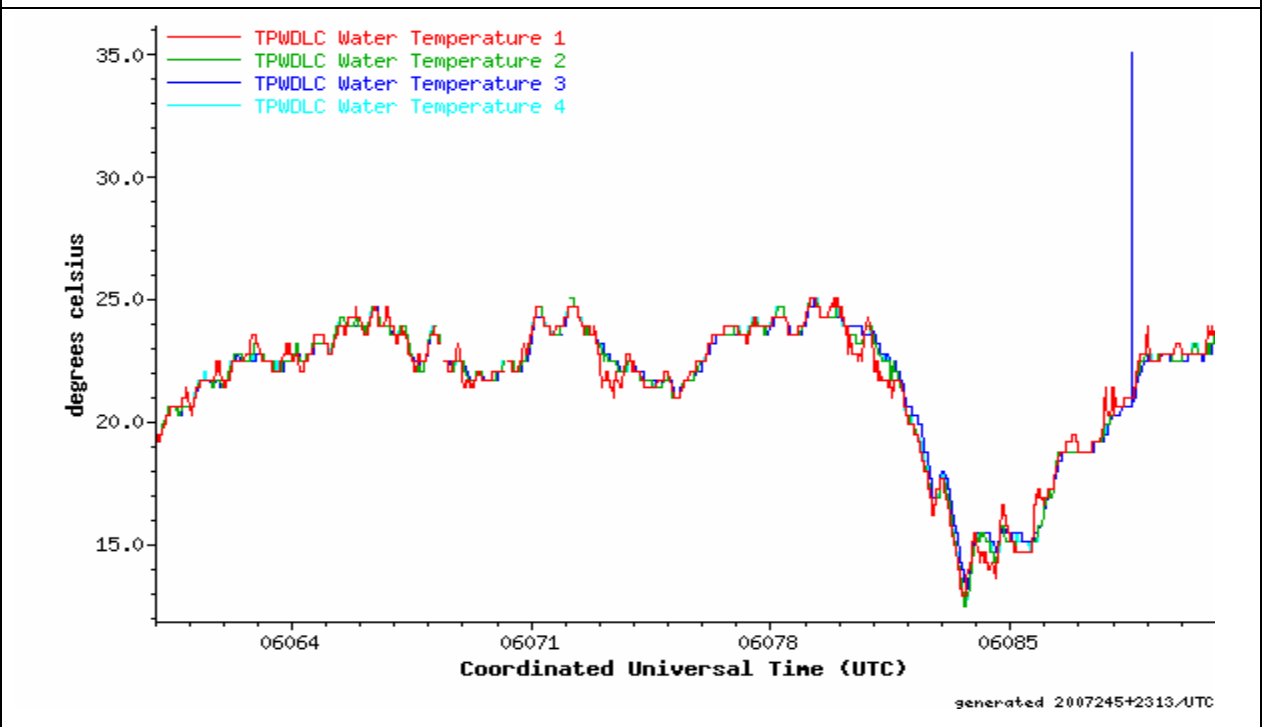
January 2006 Temperature records for the TPWD Land Cut Station



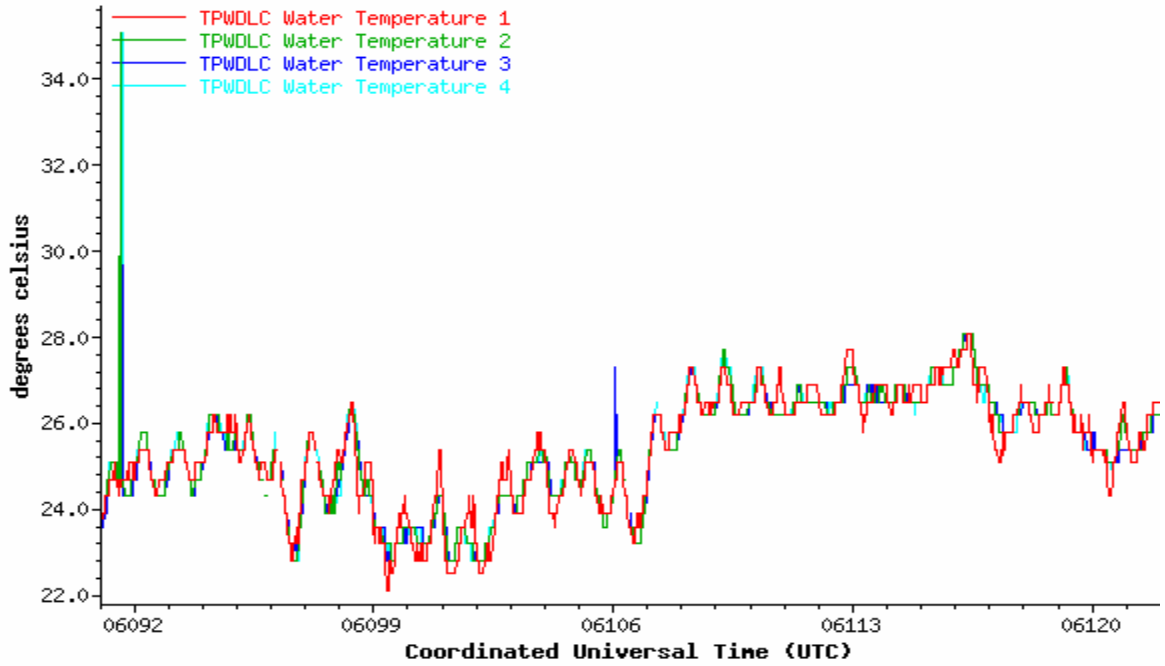
February 2006 Temperature records for the TPWD Land Cut Station



March 2006 Temperature records for the TPWD Land Cut Station

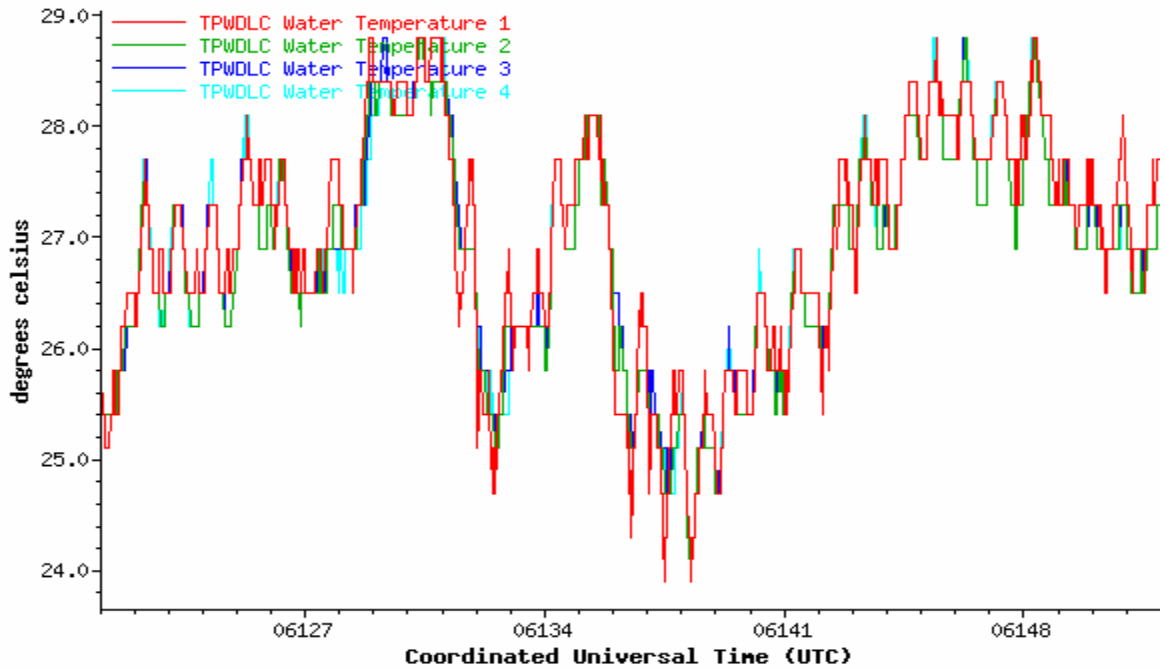


April 2006 Temperature records for the TPWD Land Cut Station



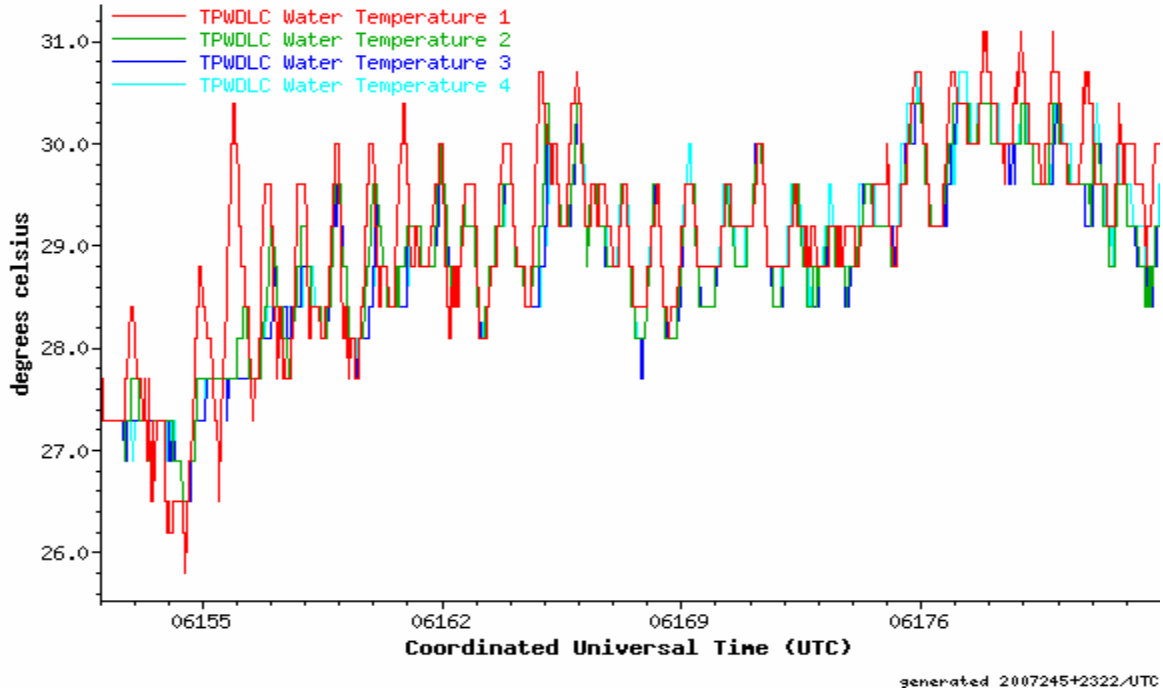
generated 2007245+2314/UTC

May 2006 Temperature records for the TPWD Land Cut Station

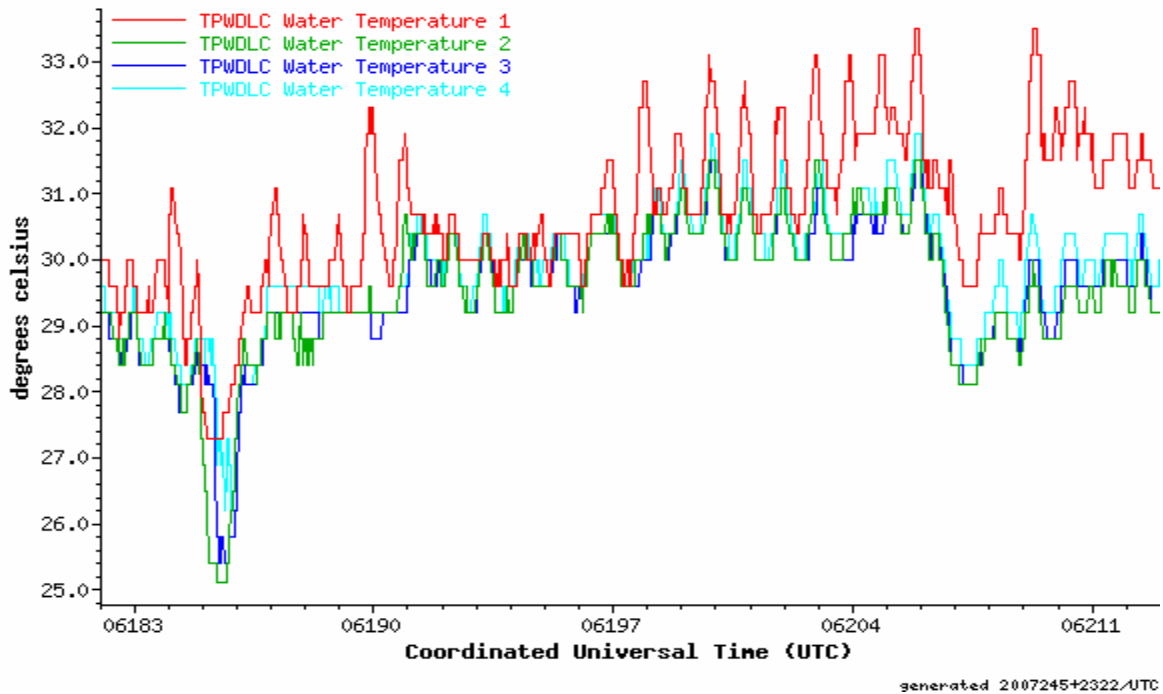


generated 2007245+2321/UTC

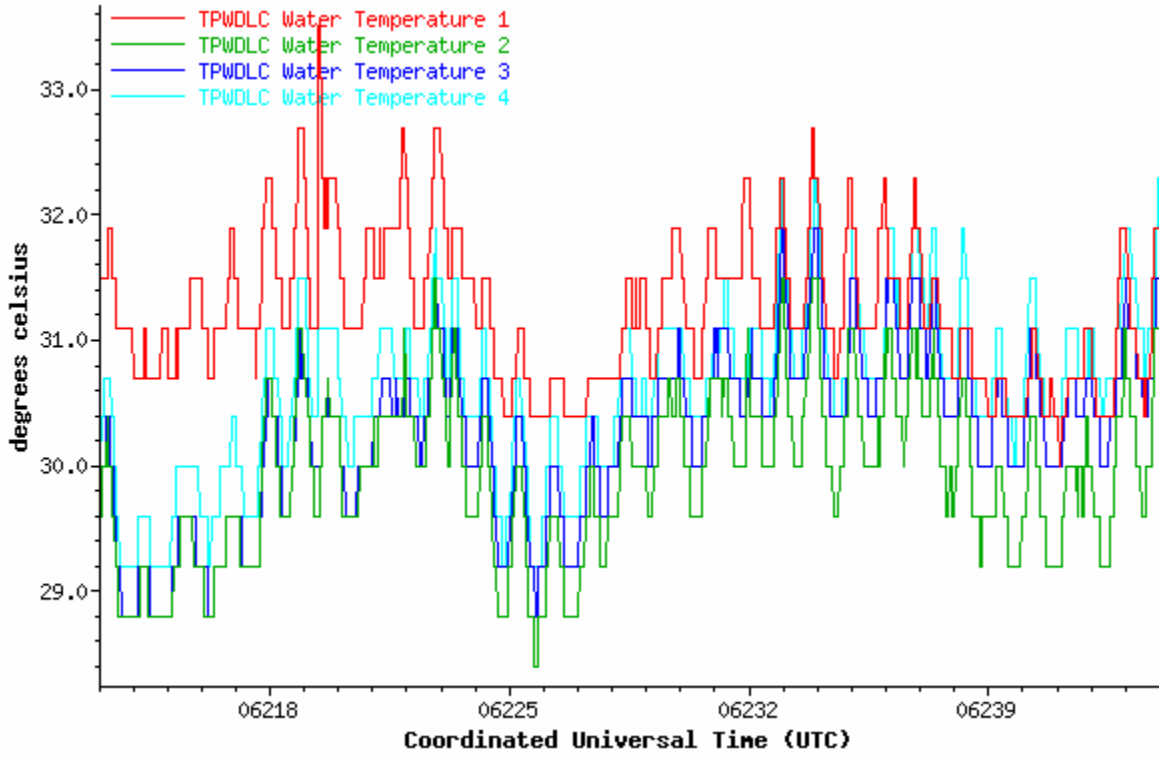
June 2006 Temperature records for the TPWD Land Cut Station



July 2006 Temperature records for the TPWD Land Cut Station

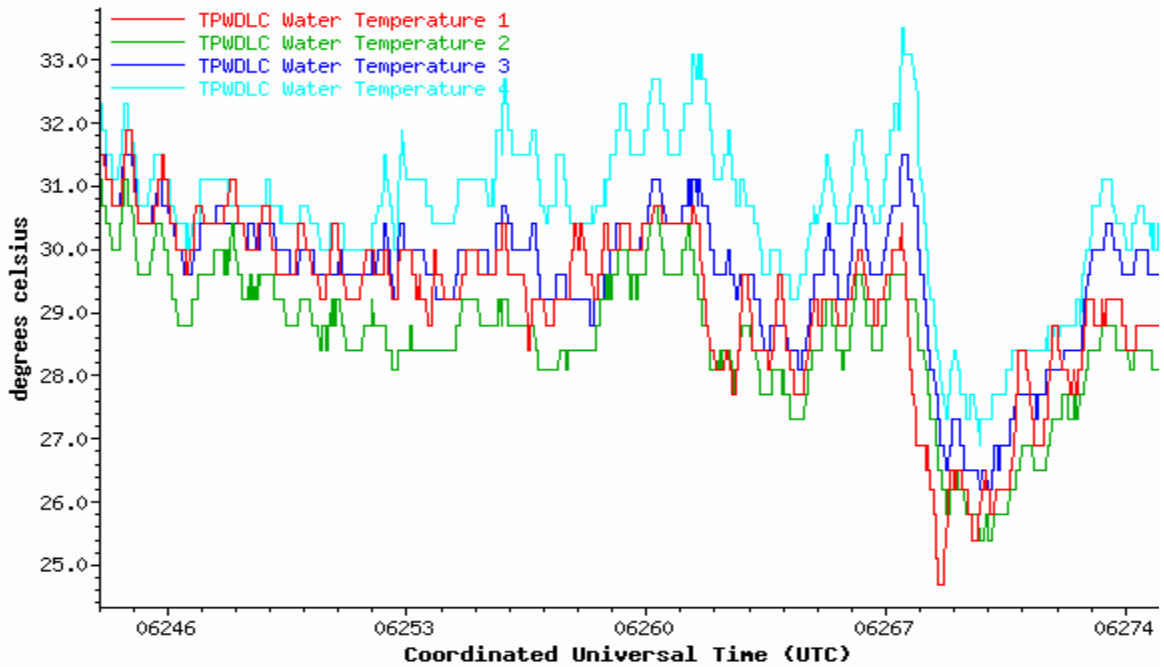


August 2006 Temperature records for the TPWD Land Cut Station



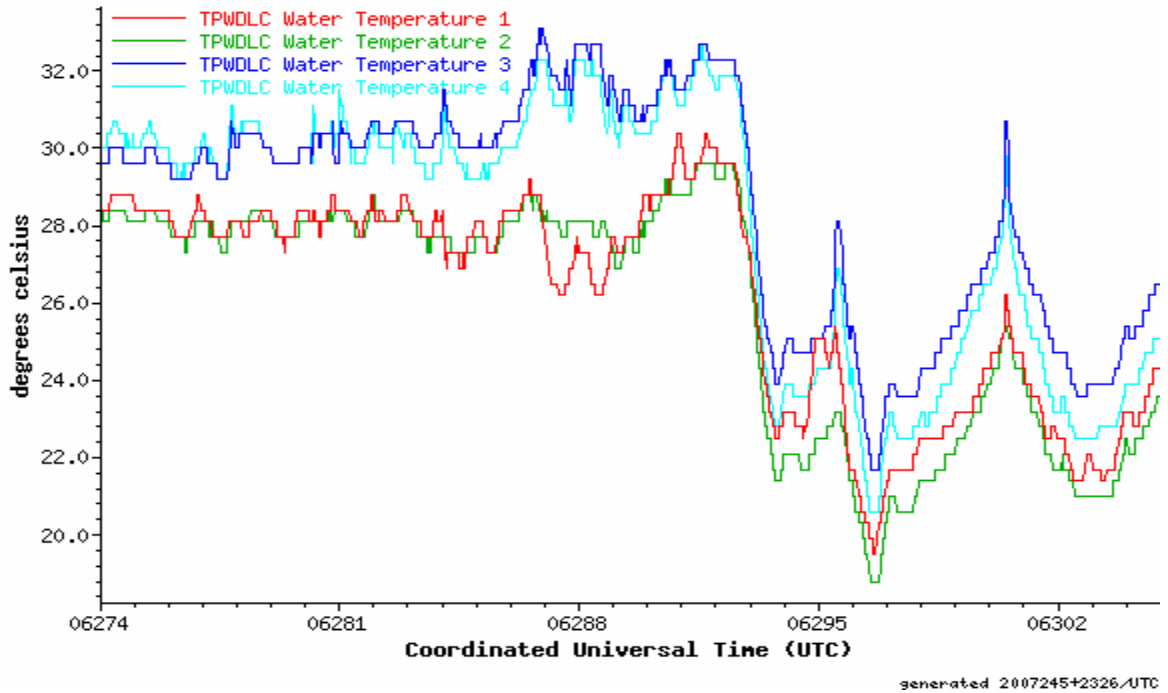
generated 2007245+2324/UTC

September 2006 Temperature records for the TPWD Land Cut Station

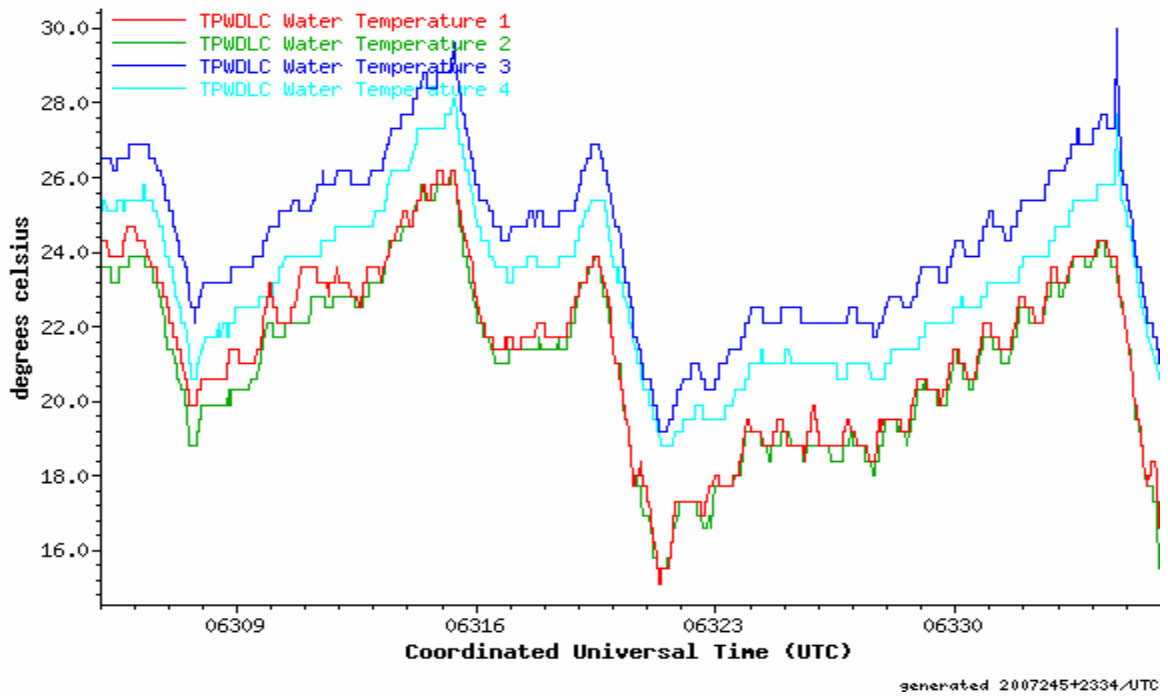


generated 2007245+2324/UTC

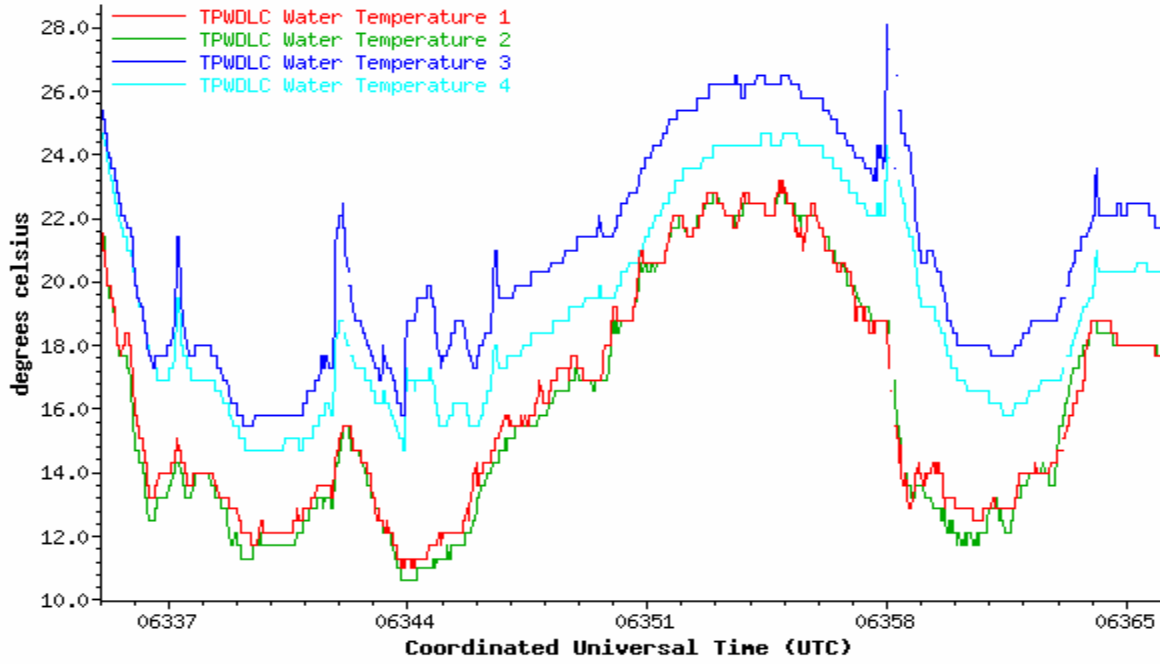
October 2006 Temperature records for the TPWD Land Cut Station



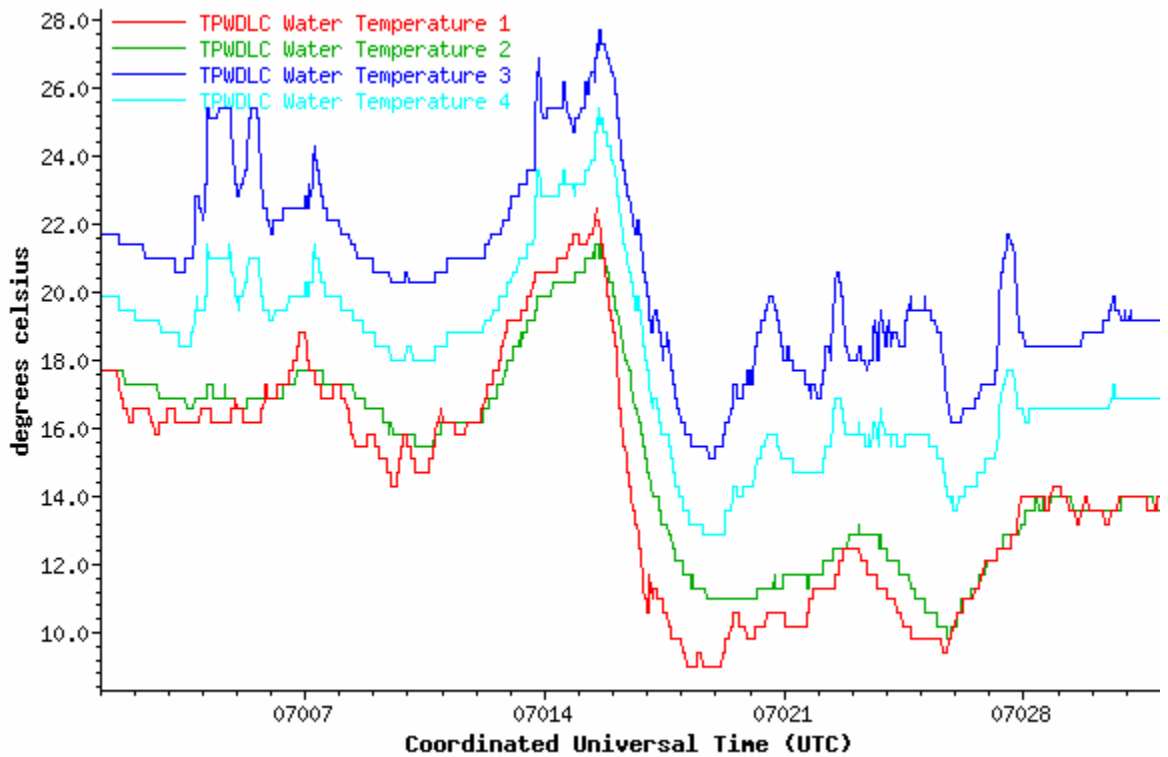
November 2006 Temperature records for the TPWD Land Cut Station



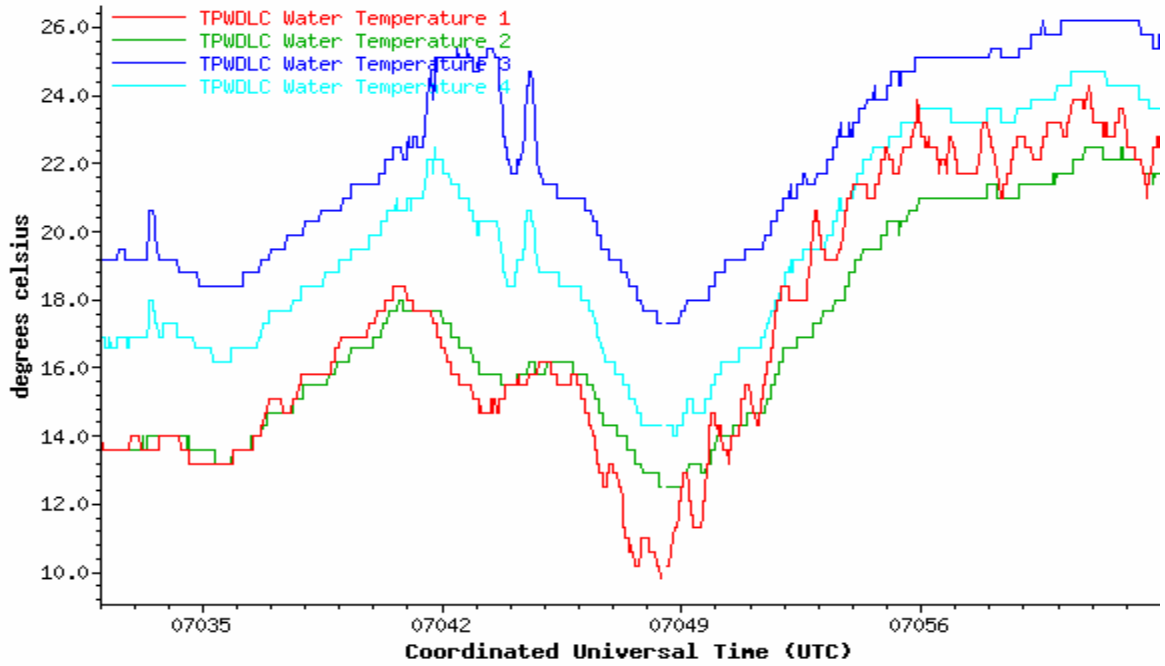
December 2006 Temperature records for the TPWD Land Cut Station



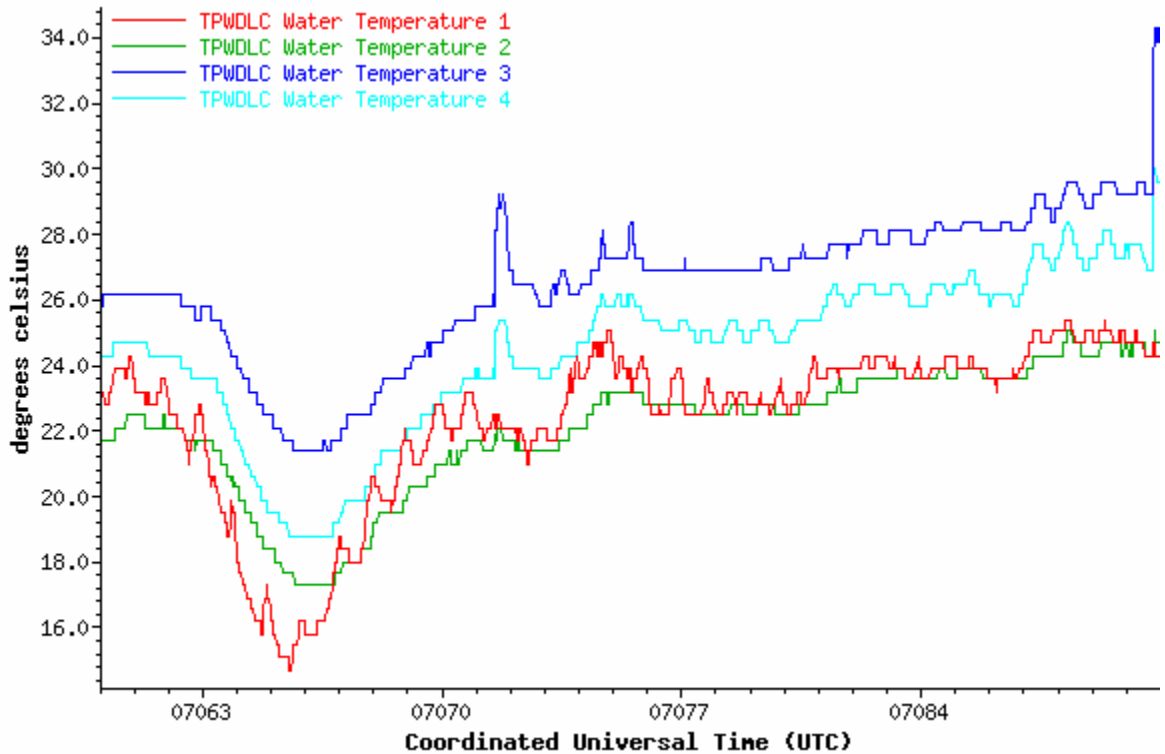
January 2007 Temperature records for the TPWD Land Cut Station



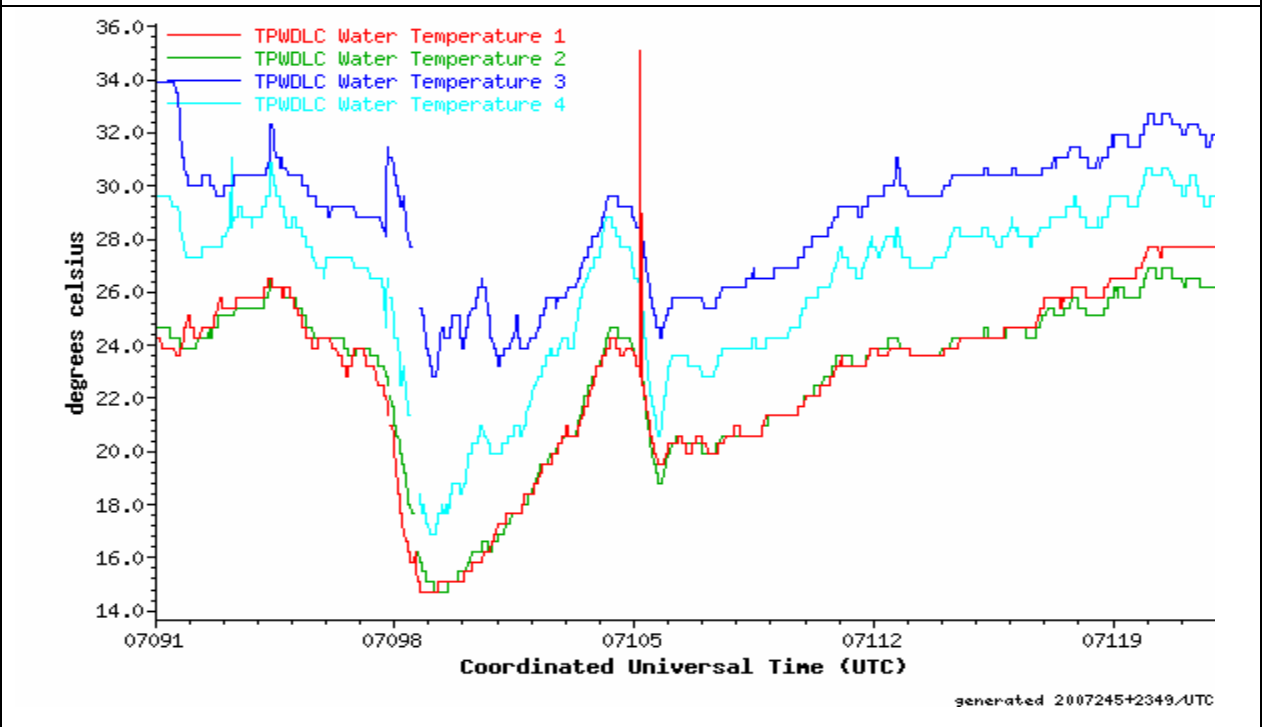
February 2007 Temperature records for the TPWD Land Cut Station



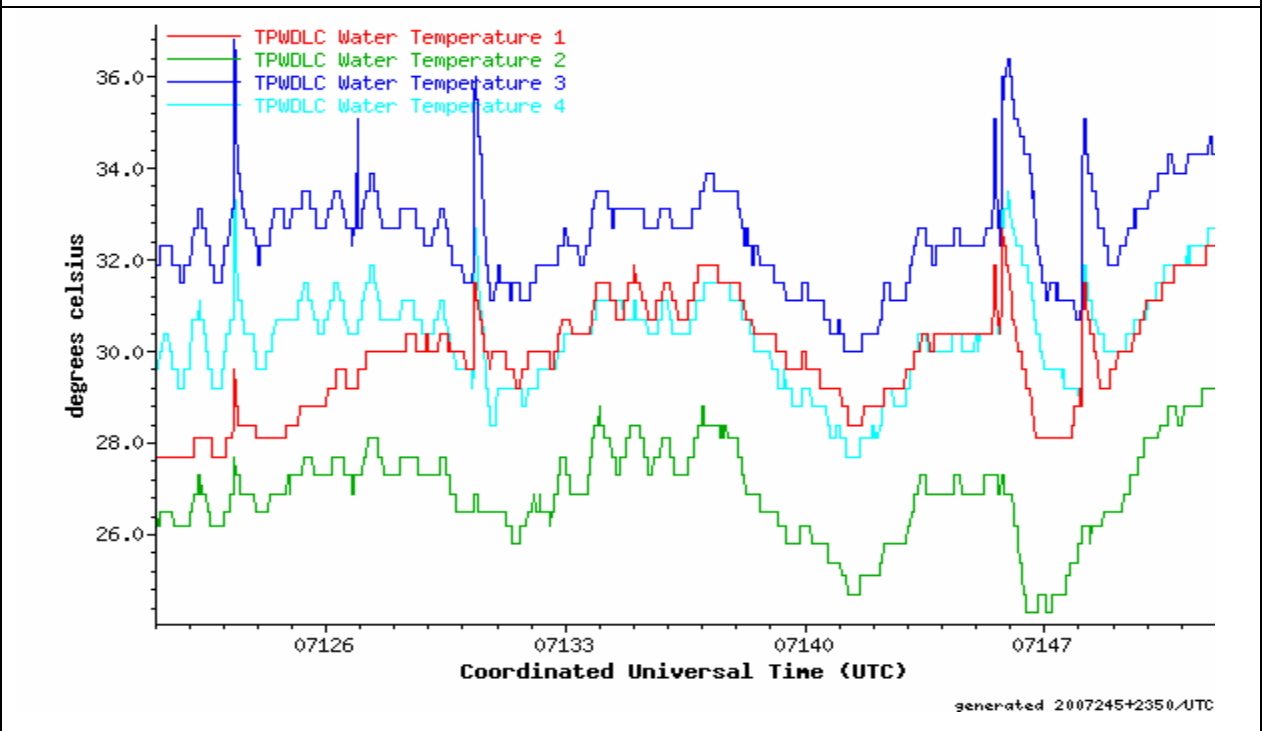
March 2007 Temperature records for the TPWD Land Cut Station



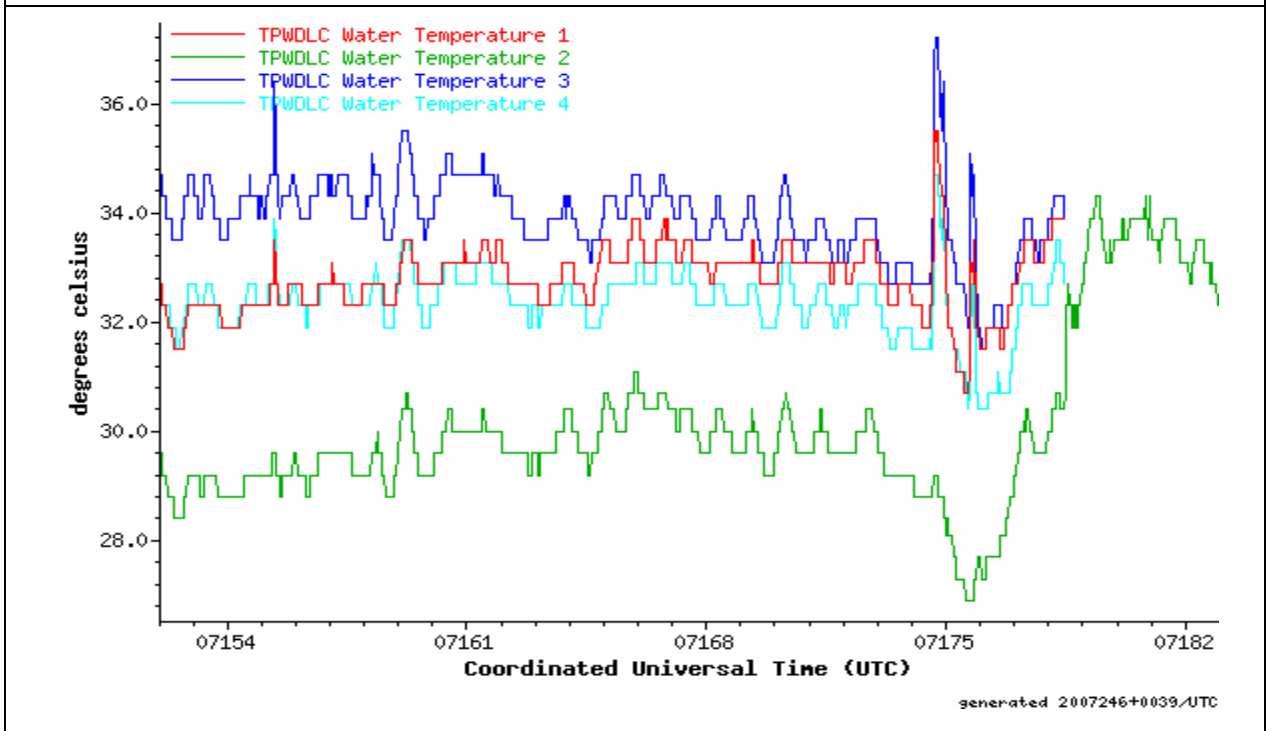
April 2007 Temperature records for the TPWD Land Cut Station



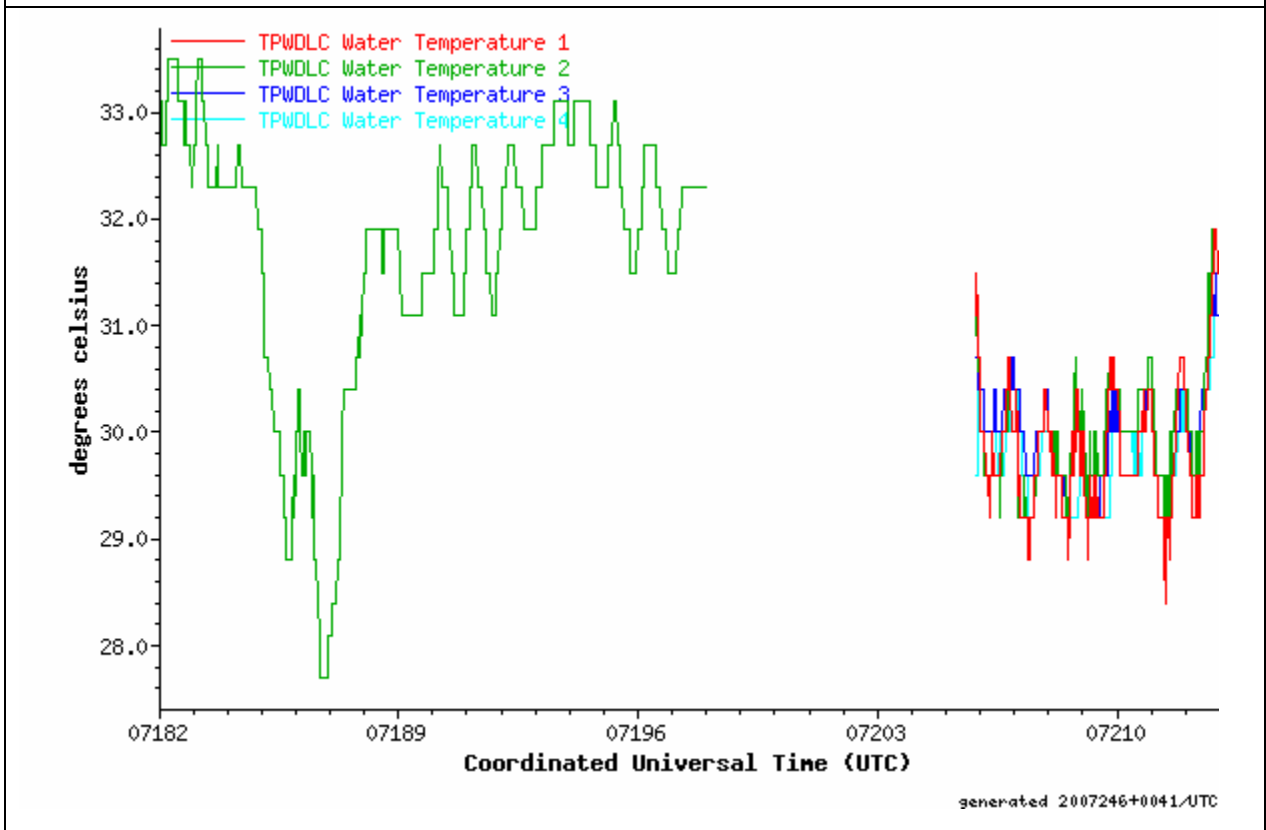
May 2007 Temperature records for the TPWD Land Cut Station



June 2007 Temperature records for the TPWD Land Cut Station



July 2007 Temperature records for the TPWD Land Cut Station



August 2007 Temperature records for the TPWD Land Cut Station

